

WATER YULUDARLA

Milliken

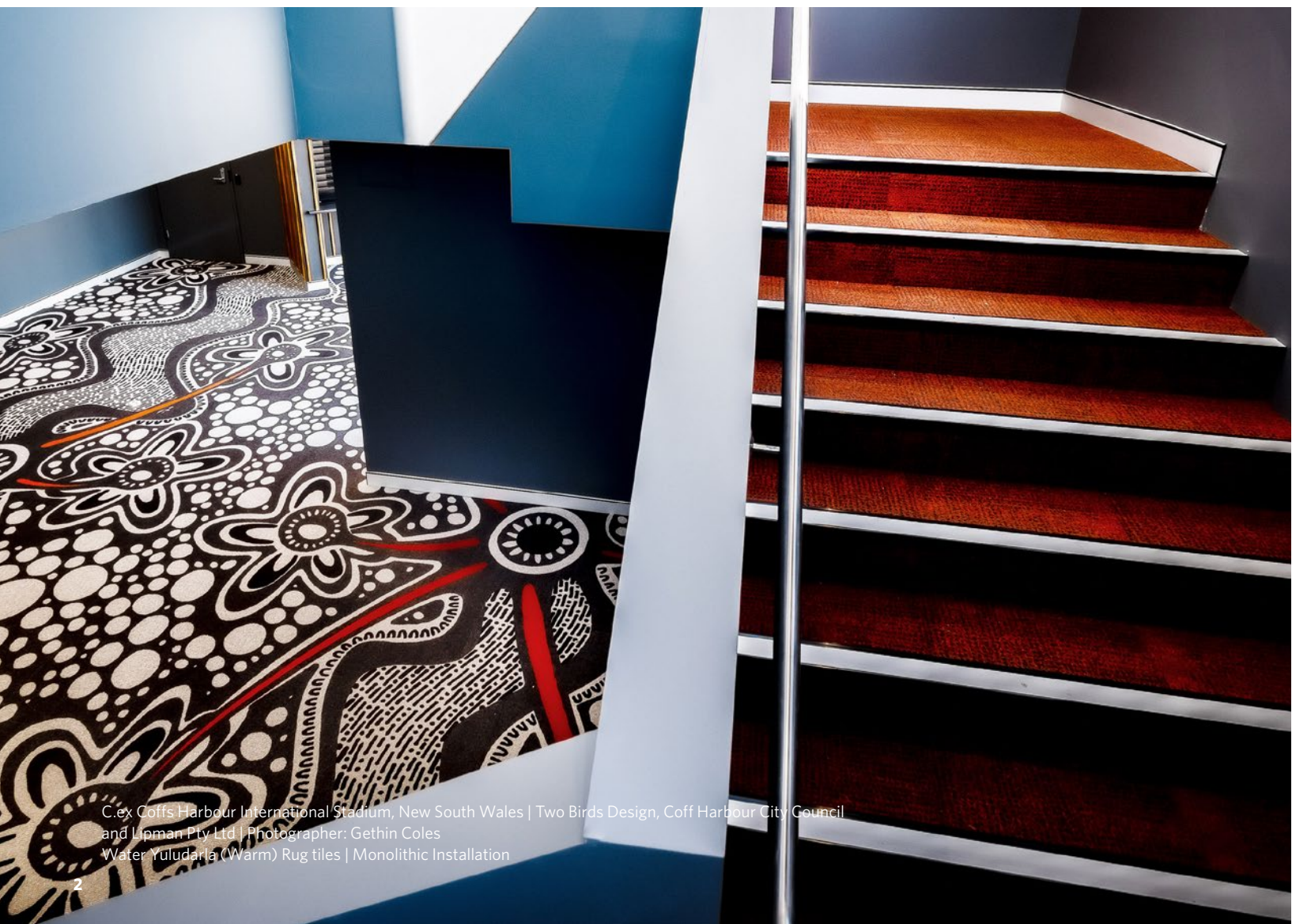


WATER YULUDARLA

Milliken's collaboration with Saltwater Freshwater Arts Alliance and the National Aboriginal Design Agency, has resulted in the development of the "Water Yuludarla" commercial carpet collection.

"Water Yuludarla" is a contemporary interpretation, based on the artwork of Gumbaynggirr Artist, Brentyn Lugnan.

Inspired by the many elements of Brentyn's original artwork, each of the six designs in the collection signify a connection to both the land and people of the Urunga region - past, current and future. The designs and colourways in the "Water Yuludarla" collection are envisioned for use across multiple market segments and spaces.



C. ex Coffs Harbour International Stadium, New South Wales | Two Birds Design, Coffs Harbour City Council and Lipman Pty Ltd | Photographer: Gethin Coles
Water Yuludarla (Warm) Rug tiles | Monolithic Installation



Artist | Brentyn Lugnan

IN BRENTYN'S WORDS

Giinagay (Hello)

My name is Brentyn Lugnan. I am a Gumbaynggirr artist, from Urunga on the Mid-North Coast of New South Wales, Australia. I have been engaged by the National Aboriginal Design Agency to create an artwork to serve as the design inspiration for Ontera to develop a commercial carpet collection to highlight contemporary Aboriginal design.

The artwork that I have created is titled "Water Yuludarla" (Water Dreaming).

It describes my family, and my connection to my country. Currently my artwork is inspired by being back on my home country of Urunga and the Bellinger Valley, which is where my family is traditionally from. The name Urunga is derived from the Gumbaynggirr word Yurruun.ga referencing "long white sands" which represents the long sand spit from Urunga Island where the Bellinger and Kalang Rivers meet.

My artworks are almost reclamation of traditional Gumbaynggirr art. Unfortunately, much has been lost over the years due in many ways to the Red Rock massacres of the 1880's and government intervention in our history - which included outlawing of spoken language and traditional and cultural practices. What I and other Goori artists from this region have endeavoured to do over recent years, is come up with a new and contemporary Gumbaynggirr style as a way of representing our country which gives a sense of identity and uniqueness.

The Gumbaynggirr people are saltwater freshwater people. My intention for "Water Yuludarla" - and nearly all my artwork - is to represent these aspects in some way.

In this artwork, you can see the river flowing through the middle and along the edges of the river are representations of people; my ancestors and all the people who came before us who were sustained and nourished by the river and everything it had to offer. In the middle you see my family symbol branching out to smaller family units. This shows that our Spirit comes from our connection to country, and this extends to our families. So as the family grows and spreads out we still take a piece of home with us. It's all about our connection to country, and how this is integral to Aboriginal people, their culture and their lives. The use of circles and dots has a high spiritual significance in this region as they were mainly used for body ornamentation, Corroboree and initiation. I use them to highlight how sacred the land is to us, and has been for so long.

In "Water Yuludarla" there is layer upon layer of connection to country.

Yarri yarrang (Bye)





Mercy Convent Building

Star of the Sea Junior Primary School, South Australia | Edge Architects & Interior Design & Totalspace Design
Photographer: David Sievers
Water Yuludaria, Jagun in Charcoal (JAG6-133), Mayala in Charcoal (MAY6-133) and Mayala in Fern (MAY14-180),
and Formwork in Pitch (FWK27) | Brick (Horizontal) Installation

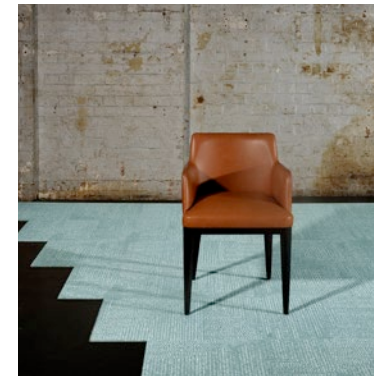
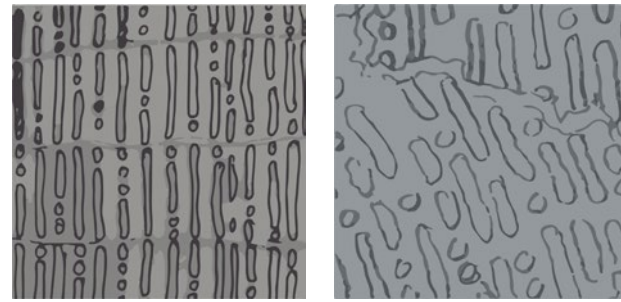
GUUNU (LIFE)

DESIGN INSPIRATION

Inspired by the land and the natural environment of the Northern Regions of NSW, the design combines the land boundary elements which has been layered into the background.

The dot elements incorporated into the foreground of the collection can be found in Brentyn's artwork "Water Yuludarla".

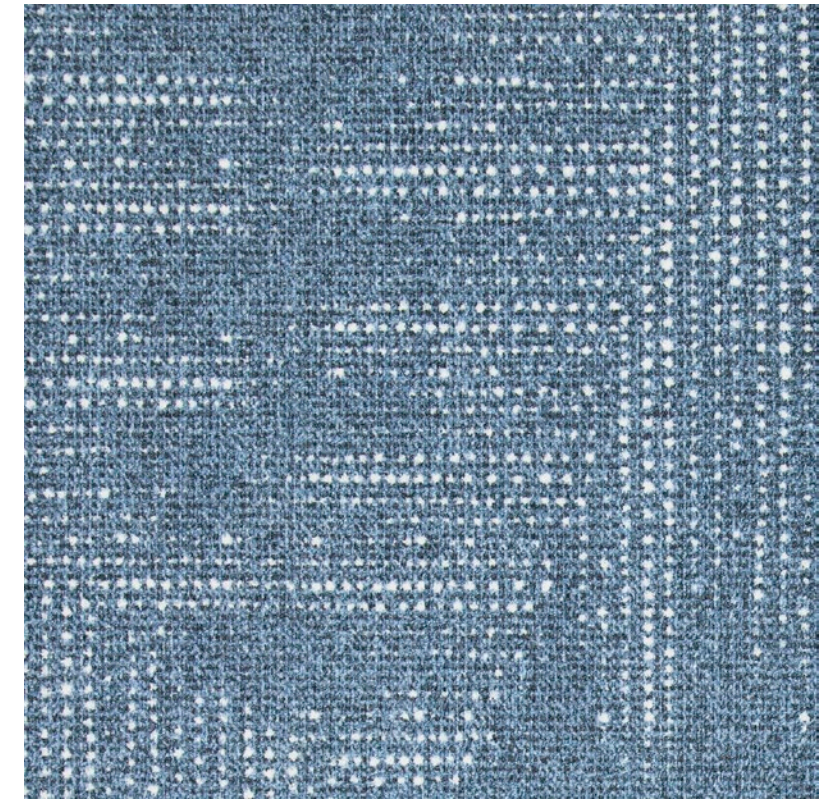
Guunu is a traditional take on the 'dot paintings' recognised to many across the globe as Aboriginal artwork.



Guunu in Stream | GUU140-100



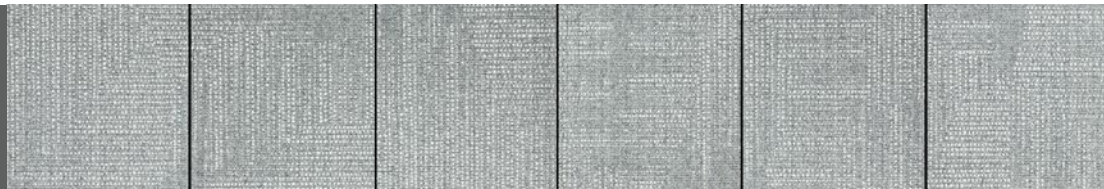
Guunu in Charcoal | GUU6-133



Guunu in Oceanic | GUU73-180

Guunu

Supplied in a multi-tile pattern.



Recommended combinations: Guunu (Life) Stream and Charcoal can be applied to installs to complement the Oceanic palette.



Carlisle Swimming Head Office, New South Wales - Geoff Ward, Architect
Guunu In Oceanic | GUU73-180 | Brick (Horizontal) Installation

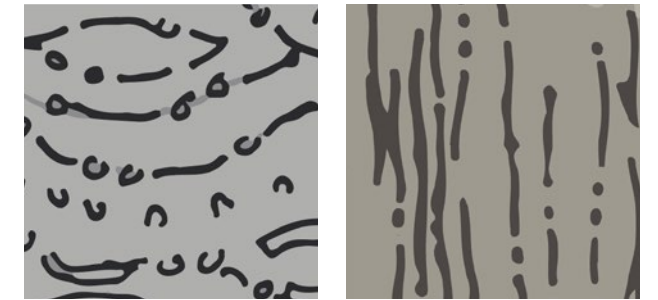


YILDAAN (DREAMING TRACK)

DESIGN INSPIRATION

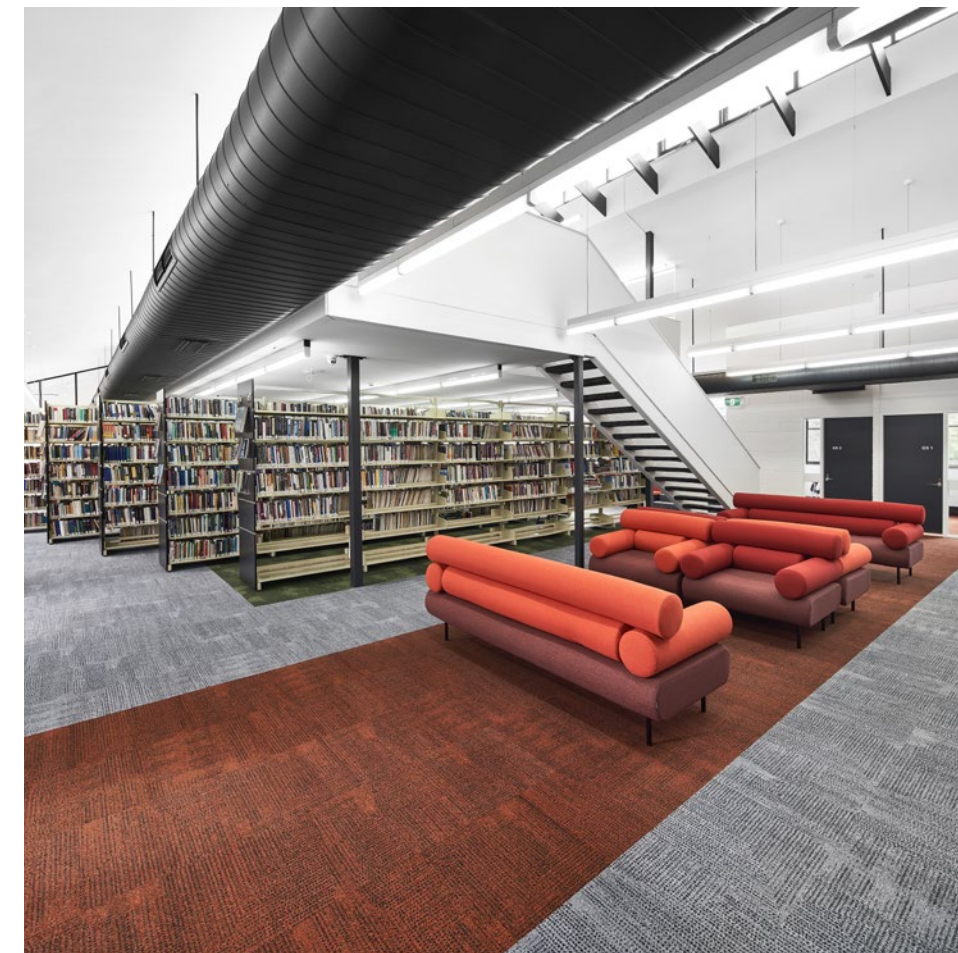
Inspired by photography of the Northern Regions of NSW, the design captures an aerial perspective, showcasing the land textures and water marks which are incorporated into the design.

Yildaan is the reverse to the Guunu design. Both designs can be installed together creating a balancing effect from light to dark tones with the dot elements.



Yildaan

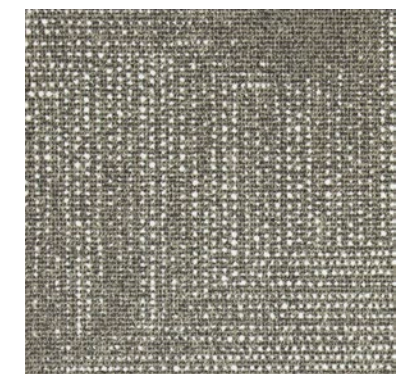
Supplied in a multi-tile pattern.



Recommended combinations:
Yildaan (Dreaming Track) Blush and
Guunu (Life) Bark can be applied to
installs to complement the Ochre palette.



Yildaan in Blush | YIL146-100



Guunu in Bark | GUU94-59

BINDARRAY (RIVER)

DESIGN INSPIRATION

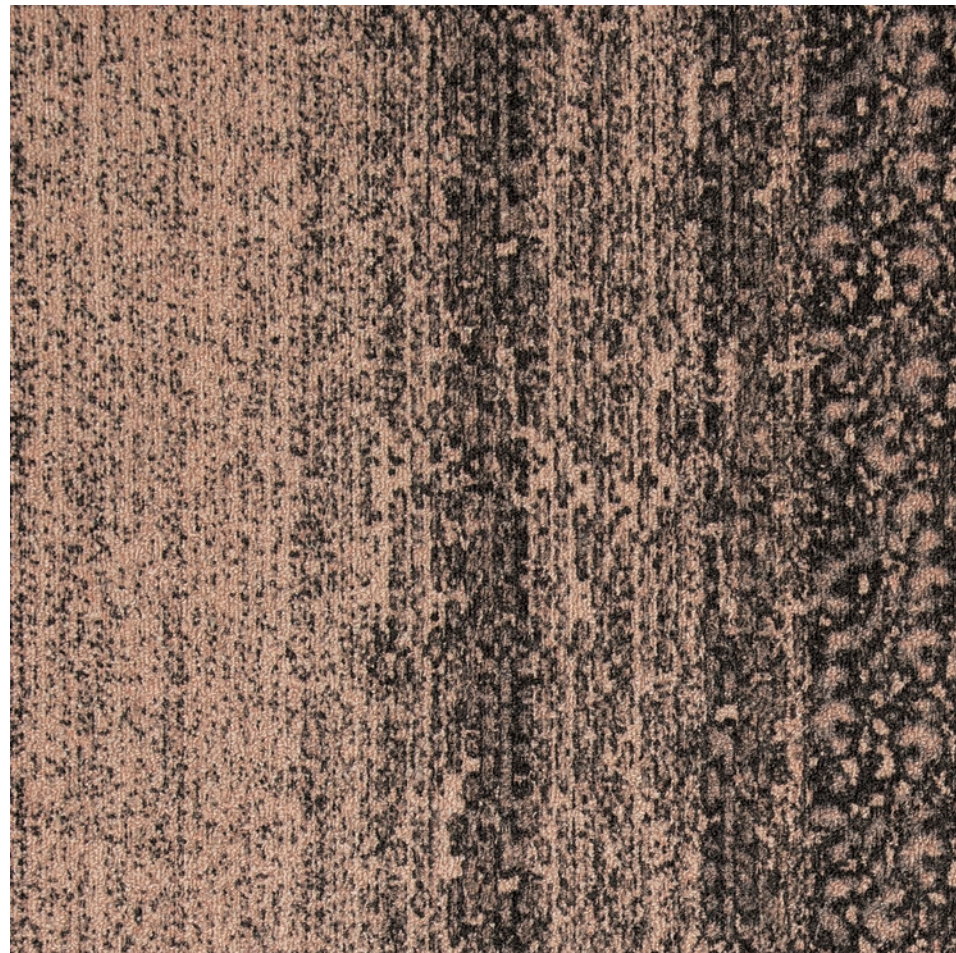
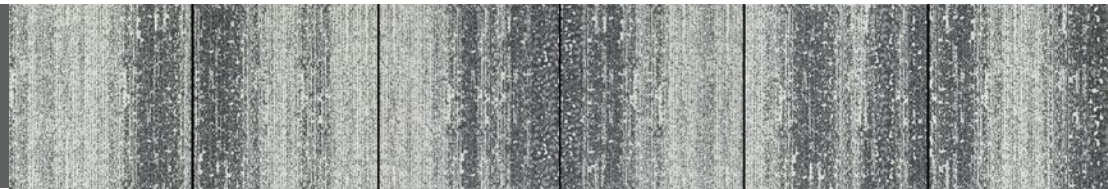
This design captures the textural elements of the river bank and the symbolic connection between people, water and land. It is inspired by the river in the centre of Brentyn's artwork "Water Yuludarla".

Additional inspirational imagery to accompany the Bindarray design captures still shots of the movement of the sand connecting to the water's edge and the effect it displays.



Bindarray

Supplied in a multi-tile pattern.



Bindarray in Blush | BIN146-100

Recommended combinations:
Mayala (Moving) Blush and Yildaan (Dreaming Track) Blush can be applied to installs to complement the Bindarray design.



Mayala in Blush | MAY146-100



Yildaan in Blush | YIL146-100



Bindarray in Blush | BIN146-100 | Brick (Horizontal) Installation

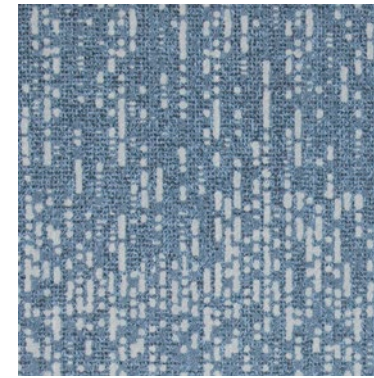
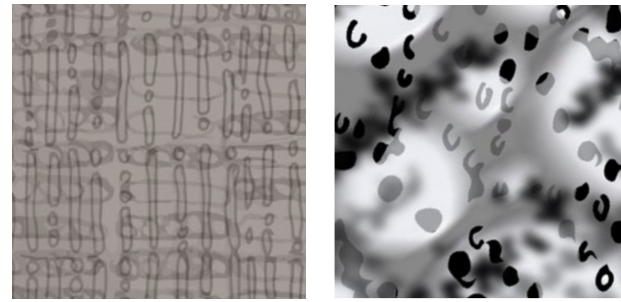
GULUUNA (RAIN)

DESIGN INSPIRATION

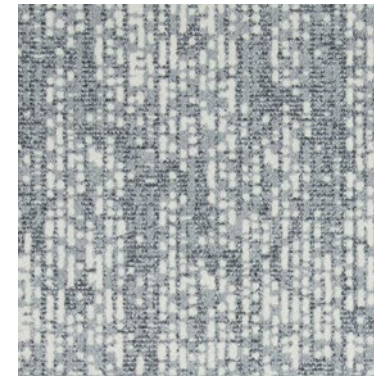
The effect of rain falling gently on the river was the inspiration for this design.

The combination of rain and sunlight reflections, captures the movement and essence of the landscape.

Guluuna is a technological and contemporary look at water with a soft ambience.



Guluuna in Oceanic | GUL73-180



Guluuna in Ash | GUL145-27



Guluuna in Ochre | GUL33-59



Guluuna

Supplied in a multi-tile pattern.

Recommended combinations: Guluuna (Rain) Oceanic and Ash can be applied to installs to complement the Bark palette.



Tutuyarlu Performing Arts Centre, Ocean View P-12 College, South Australia | Studio Nine Architects & BluBuilt Constructions
Photographer: David Sievers
Yildaan in Oceanic (GUL73-180) and Charcoal (GUL6-133) | Brick (Horizontal) Installation

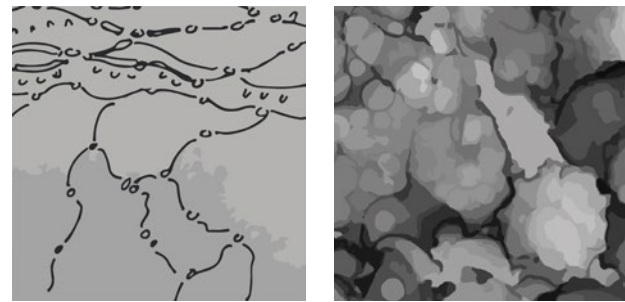


MAYALA (MOVING)

DESIGN INSPIRATION

This design captures the natural wind-worn rock formations of the cracked earth from an aerial perspective.

Organic movement of land and water are blended elements within



Mayala

Supplied in a multi-tile pattern.



Epic Energy Head Office, South Australia | Alliance Commercial | Photographer: Jay Moyes
Mayala in Oceanic | MAY73-180 | Brick (Horizontal) Installation

Recommended combinations:
Mayala (Moving) Bark and Ash
can be applied or interchanged
to installs to complement the
Charcoal and Fern palette.



Mayala in Bark | MAY94-59



Mayala in Ash | MAY145-27



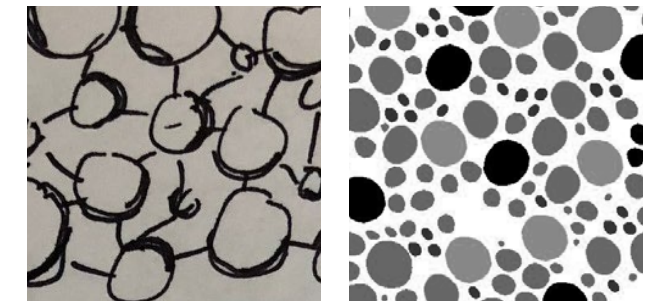
Star of the Sea Junior Primary School, South Australia | Edge Architects & Interior Design & Totalspace Design
Photographer: David Sievers
Top to Bottom: Jagun in Charcoal (JAG6-133), Mayala in Charcoal (MAY6-133) and
Mayala in Fern (MAY141-180) | Brick (Horizontal) Installation



JAGUN (BIRTHPLACE)

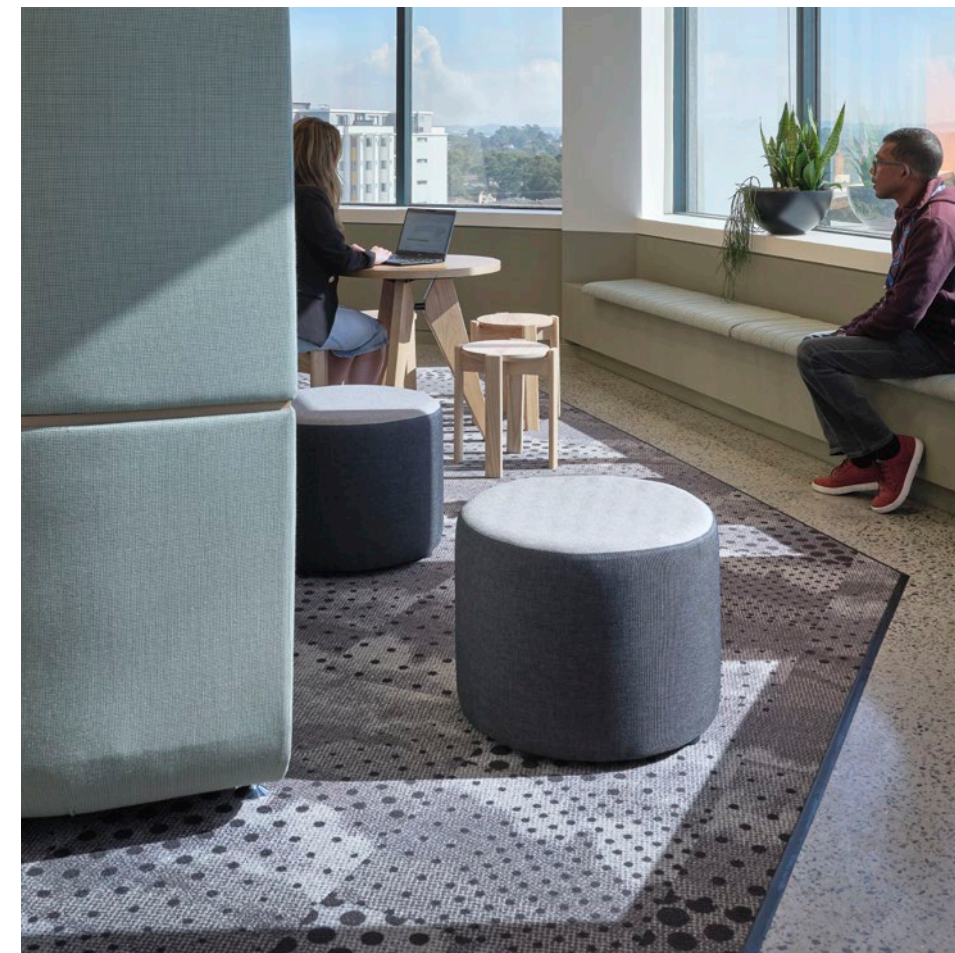
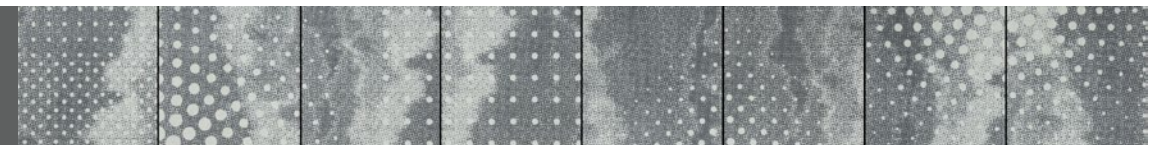
DESIGN INSPIRATION

This is a layered pattern capturing elements of the Mayala (Moving) design in the background, while incorporating the dot elements from Brentyn's artwork in the foreground.

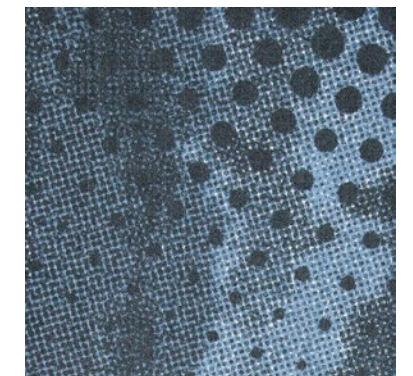


Jagun

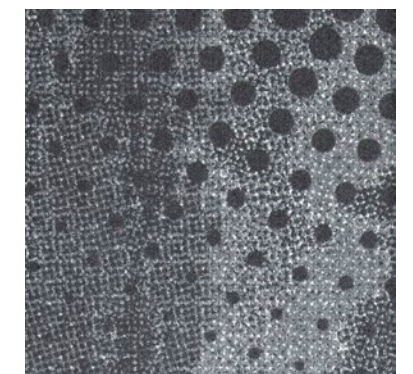
Supplied in a multi-tile pattern.



Recommended combinations:
Jagun (Birthplace) Oceanic and
Charcoal can be applied to installs
to complement the Bark palette.



Jagun in Oceanic | JAG73-180



Jagun in Charcoal | JAG6-133

WATER YULUDARLA FEATURED ARTWORK TILE FORMAT

The featured artwork tile format was re-created from Brentyn Lugnan's original "Water Yuludarla" artwork and can be placed in impactful interior spaces, complemented with other "Water Yuludarla" designs.

Standard sizes include:
6 x 4 TL (24 tiles) and 8 x 12 TL (96 tiles) | Monolithic Installation
Custom sizes are available by request.

For defined layout methods please visit millikenfloors.com.au

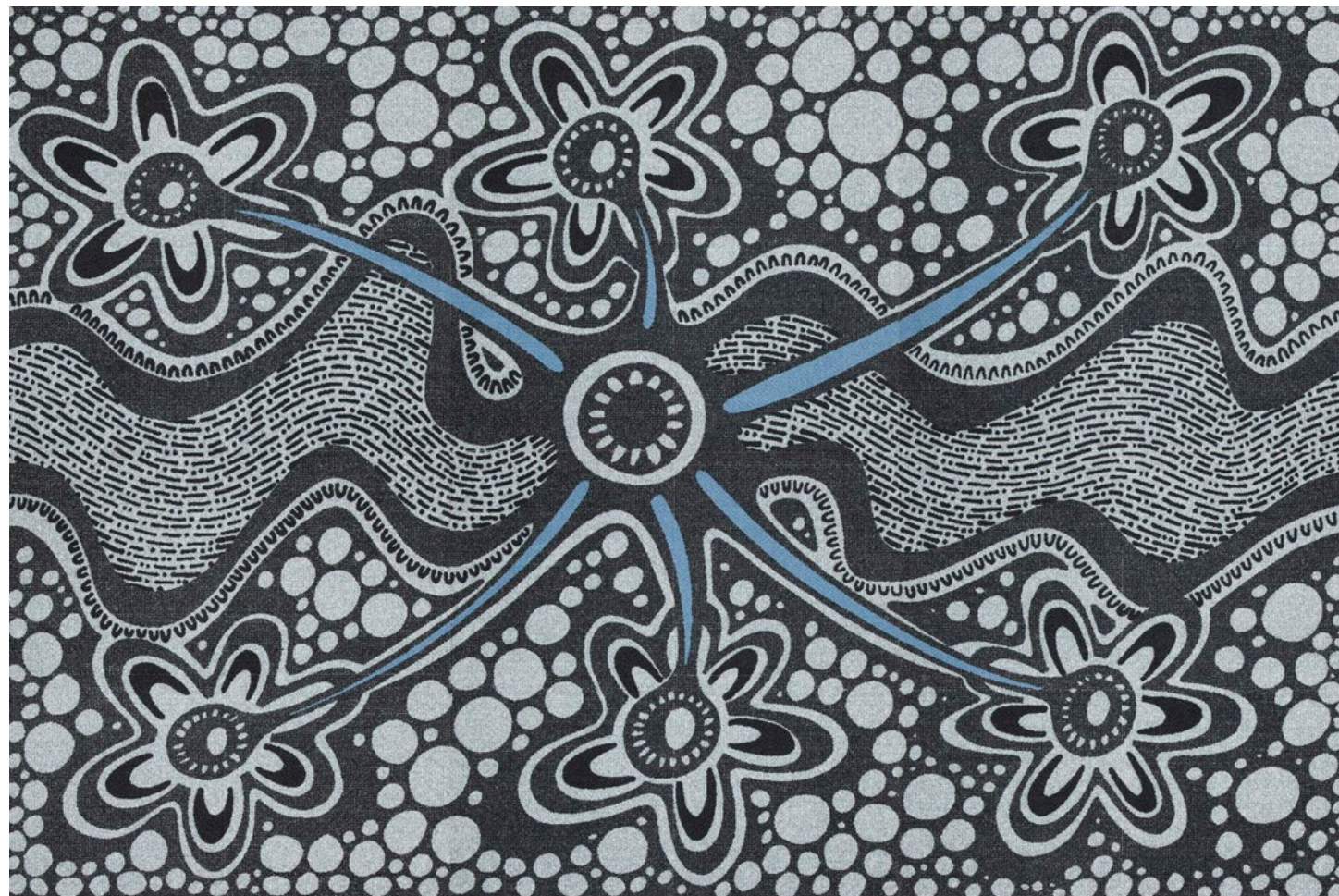


National Aboriginal Design Agency - a social enterprise run by Saltwater Freshwater Arts Alliance.

We Acknowledge

Milliken would like to acknowledge Aboriginal and Torres Strait Islander peoples as Australia's First People and Traditional Custodians. We value their cultures, identities, and continuing connection to country, waters, kin and community.

Milliken pay our respects to Elders past and present and are committed to making a positive contribution to the wellbeing of Aboriginal and Torres Strait Islander people, by providing products and a work environment that are welcoming, safe, culturally appropriate and inclusive.



Water Yuludarla | Cool Colourway
Available in 6 x 4 TL (24 tiles) | 8 x 12 TL (96 tiles)



Water Yuludarla | Warm Colourway
Available in 6 x 4 TL (24 tiles) | 8 x 12 TL (96 tiles)

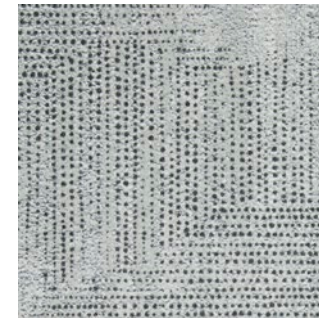


Yarpa Head Office, New South Wales | BVN | Photographer: Barton Taylor
Jagun in Blush | JAG146-100 | Brick (Horizontal) Installation



COLOURWAY

Yildaan (Dreaming Track)



YIL145-27 ASH



YIL140-100 STREAM



YIL146-100 BLUSH



YIL33-59 OCHRE



YIL6-133 CHARCOAL



YIL73-180 OCEANIC

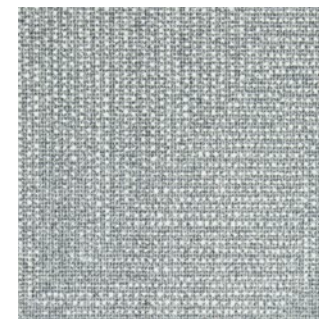


YIL94-59 BARK

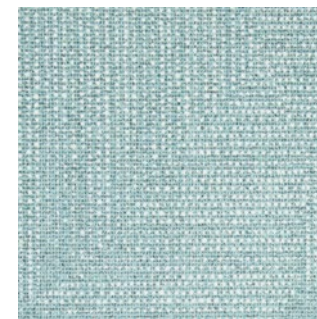


YIL141-180 FERN

Guunu (Life)



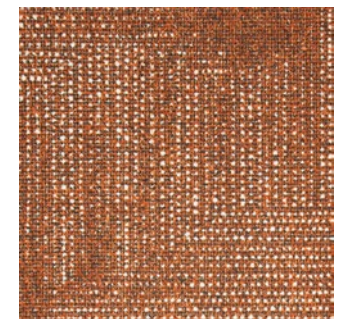
GUU145-27 ASH



GUU140-100 STREAM



GUU146-100 BLUSH



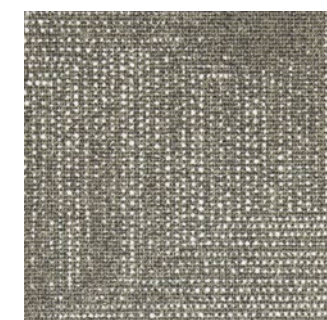
GUU33-59 OCHRE



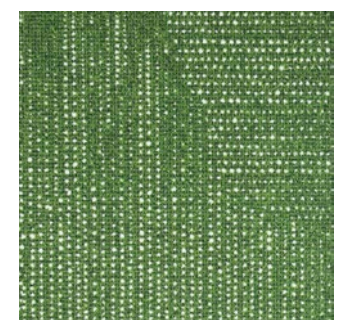
GUU6-133 CHARCOAL



GUU73-180 OCEANIC



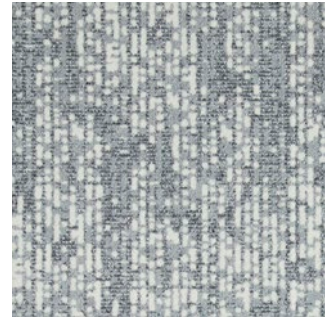
GUU94-59 BARK



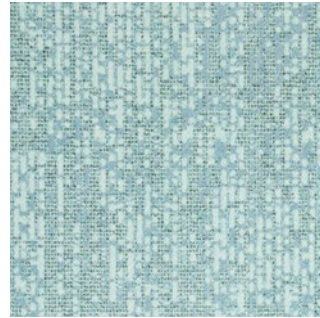
GUU141-180 FERN

COLOURWAY

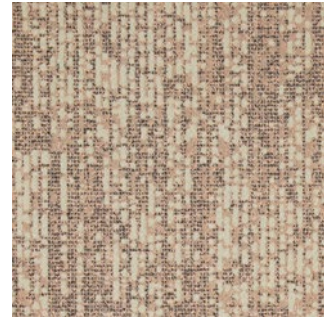
Guluuna (Rain)



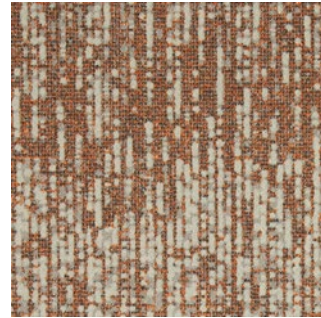
GUL145-27 ASH



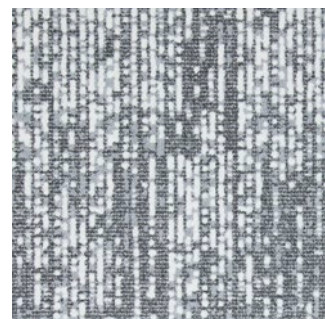
GUL140-100 STREAM



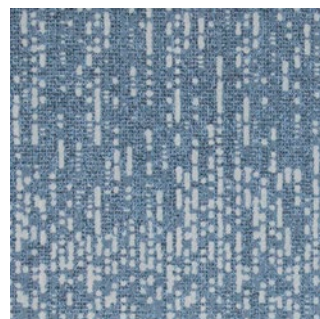
GUL146-100 BLUSH



GUL33-59 OCHRE



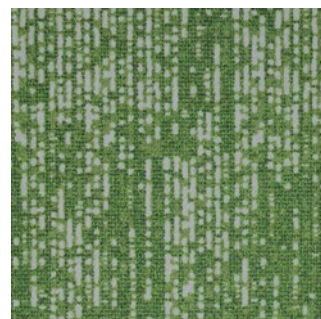
GUL6-133 CHARCOAL



GUL73-180 OCEANIC

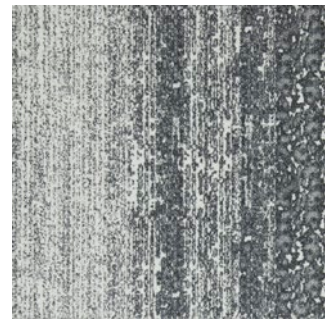


GUL94-59 BARK



GUL141-180 FERN

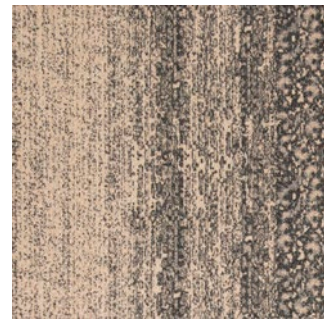
Bindarray (River)



BIN145-27 ASH



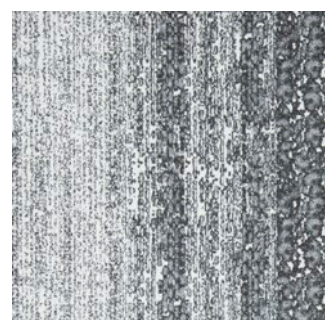
BIN140-100 STREAM



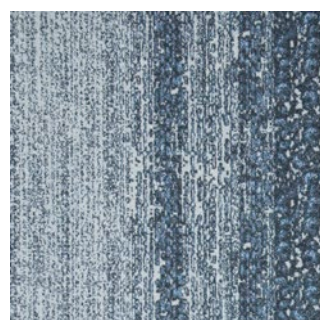
BIN146-100 BLUSH



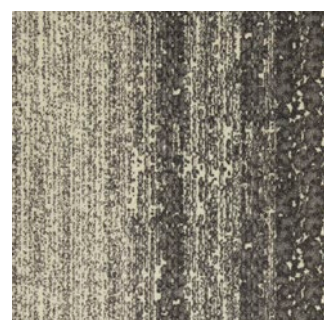
BIN33-59 OCHRE



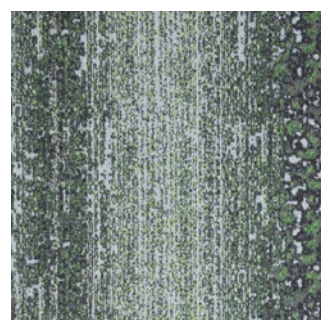
BIN6-133 CHARCOAL



BIN73-180 OCEANIC



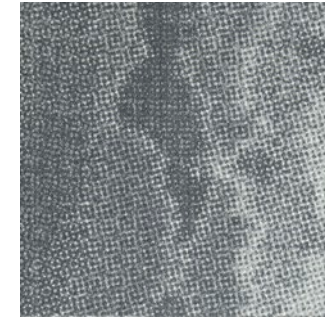
BIN94-59 BARK



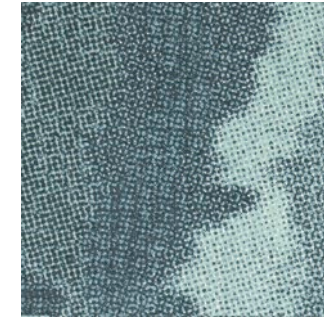
BIN141-180 FERN

COLOURWAY

Mayala (Moving)



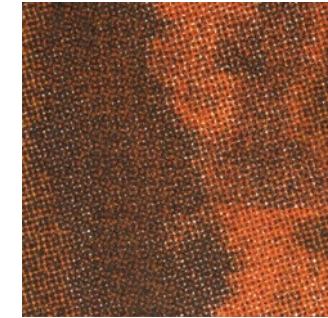
MAY145-27 ASH



MAY140-100 STREAM



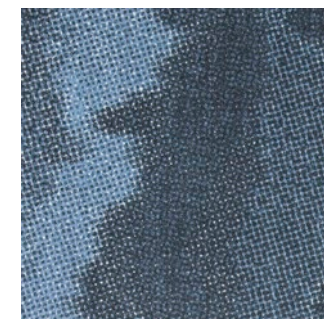
MAY146-100 BLUSH



MAY33-59 OCHRE



MAY6-133 CHARCOAL



MAY73-180 OCEANIC

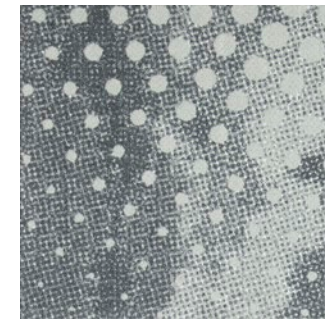


MAY94-59 BARK

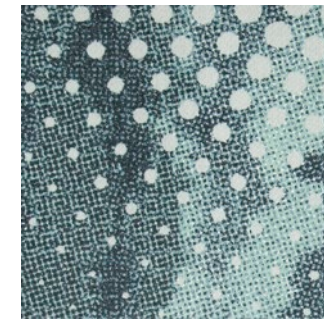


MAY141-180 FERN

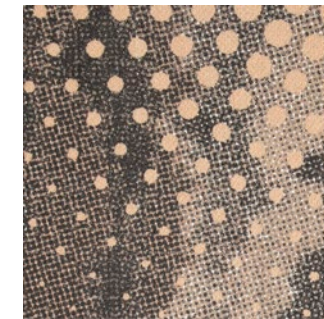
Jagun (Birthplace)



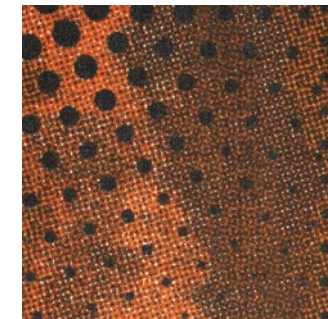
JAG145-27 ASH



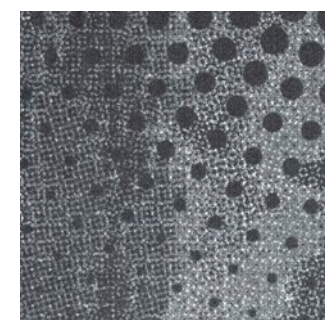
JAG140-100 STREAM



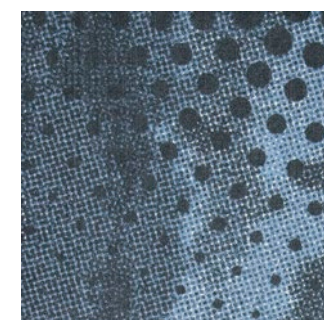
JAG146-100 BLUSH



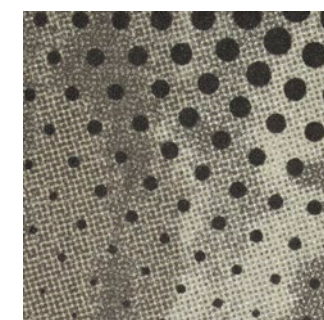
JAG33-59 OCHRE



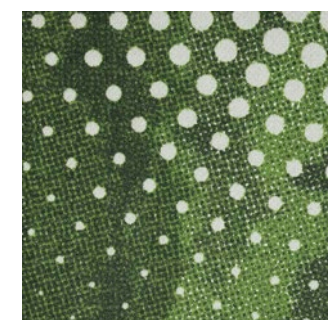
JAG6-133 CHARCOAL



JAG73-180 OCEANIC



JAG94-59 BARK



JAG141-180 FERN

Colour Statement: Representation of product colours may vary from colours as seen in this brochure due to lighting conditions and printing settings. Please contact your sales representative to obtain carpet samples to view the accuracy of the colours.

Milliken



Self-sanitising Carpet

Integrated Infection Control



MGUARD+ treatment kills 99% of the SARS-CoV-2 virus within 2 hours of contact with Milliken PrintWorks™ carpet tiles.

MGUARD+ treatment kills 99% of *S. aureus*, *E. coli*, *K. pneumoniae* in 24 hours as per AATCC 174-2.

Duration of protection varies with use.

Powered by HealthGuard®.

Only available in Australia and New Zealand.

Declare.



WellBAC®

Milliken WellBAC® open cell foam cushion provides superior durability, appearance retention and cushioning.



Up to 24% greater underfoot comfort for enhanced ergonomics whilst standing.



Up to 50% improved acoustics for quieter, more productive spaces.



Industry leading moisture management with non-reactive backings to enhance the installation process.



3rd party Verified Red-List Free products for occupant and installer well-being.



Enhanced Indoor Air Quality (Low VOC) for improved occupant and installer well-being.

FACE FABRIC

Patterns and structures made up of nylon yarns with our state of the art tufting technology.

PRIMARY BACKING

The face yarn is tufted through a high quality non-woven textile. The structure of the textile holds the yarn in place acting as the primary backing.

PRECOAT

The precoat layer locks the tufted yarns in the primary backing to ensure good tuft bind strength between the yarns and the backing.

FIBERGLASS

A high quality fiberglass layer is embedded in the polyolefin compound to ensure dimensional stability of the tile.

SECONDARY BACKING

Proprietary Polyolefin compound layer formulated by Milliken R&D scientists to create a durable and stable tile. Our formulation does not contain PVC or plasticizers.

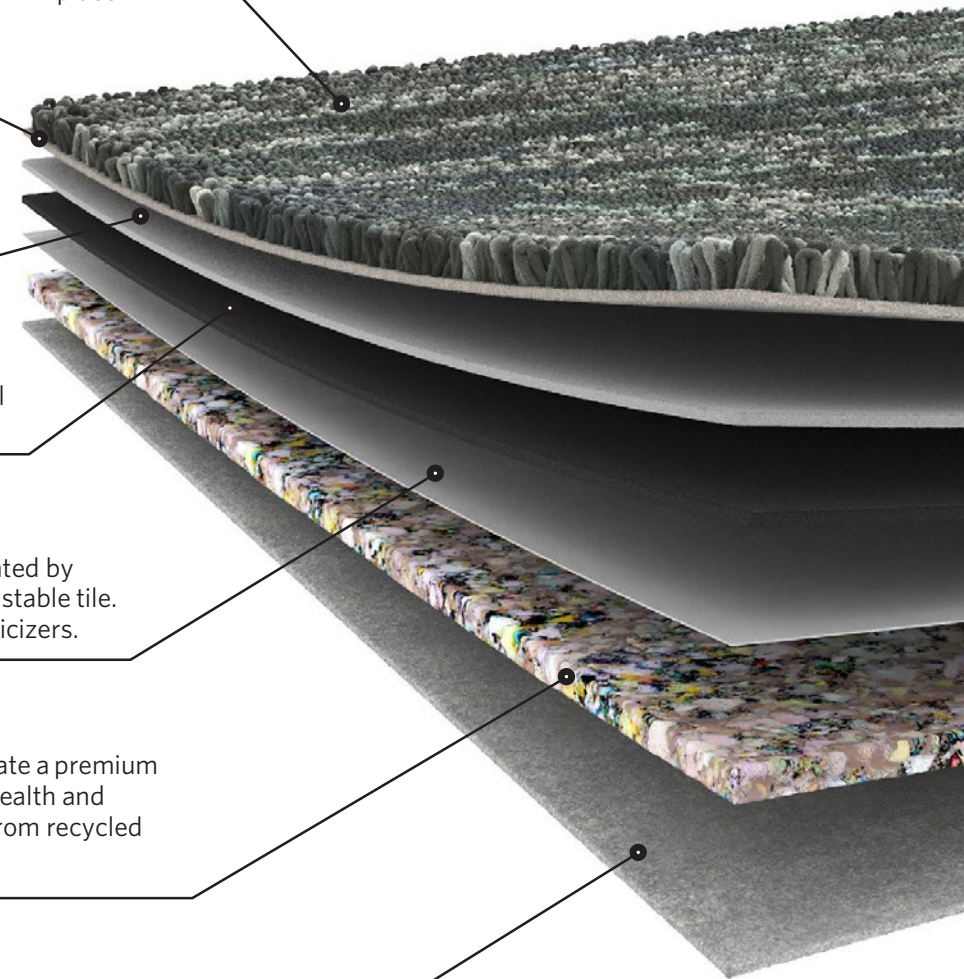
PREMIUM CUSHION

WellBAC® Comfort and Comfort Plus incorporate a premium cushion layer, designed to provide additional health and wellness benefits. Milliken's cushion is made from recycled polyurethane foam.

FELT BACK

A protective non-woven textile layer provides a breathable non-reactive finish. It enhances health and wellness.

Milliken's standard cushion backing system — offering enhanced underfoot comfort, acoustic and wear performance.



WATER YULUDARLA

Guunu | Yildaan | Bindarray | Guluuna | Mayala | Jagun

SPECIFICATION



When you choose M/PACT™ products, you can be sure your choice is carbon neutral. M/PACT™ carbon neutral products offset the raw materials and manufacturing carbon footprint* by using 3rd party Verified Carbon Standard Credits that support renewable energy and carbon reduction technologies to help fight climate change. *as calculated and verified through a ISO14025/ISO14040 compliant LCA and published in third party EPD.

Standard Backing	Cushion Backing WellBAC® Comfort (PVC FREE) (Non-Reactive Cushion Backing)
Acoustic Value	Noise Reduction Coefficient - NRC ≥ 0.25 Impact Sound Pressure Level - Ln,w ≤ 47dB
Concrete Slab Moisture Mitigation	Site-Related Solutions (SRS). Milliken Cushion backed tile + Non-Reactive Standard adhesive means installation 60 days after a new concrete pour, fully warranted no moisture testing required. Refer millikenfloors.com.au
Antiviral Antibacterial	MGUARD+ Antiviral and Antibacterial Treatment. Further information refer to millikenfloors.com.au

Construction	Tufted, Textured Loop	Lightfastness (AATCC 16E)	≥ 4.0 at 80 Hours
Tile Size	50cm x 50cm	Static Electricity	≤ 3.5KV
Yarn Type	Milliken Certified 100% Nylon	(AATCC-134) 20% R.H., 70°F	
Stain Resist Soil Release	StainSmart®	Indoor Air Quality	≤ 0.5mg/m³ (GLP0793)
Dye Method	PrintWorks™	CRI Green Label Plus™	
Gauge	1/10	VOC	Pass (ISO 10580:2010)
Stitches Per Inch	14.4	ACCS Grading	CMD 2*, REHD15*, Suitable for Stairs
Tufts	144/in² (2,230/100cm²)	Environmental	ECS Grading - Level 4 (Certificate No. 20145)
Recyclable	100%		Declare - 3rd Party Verified RED LIST FREE
Nominal Total Thickness	8.4mm		Cradle to Cradle - Silver
Nominal Total Weight	90.3 oz/yd² (3,062g/m²)		Carbon Neutral
Nominal Pile Thickness	2.8mm		Environmental Product Declaration (EPD)
Flammability (Radiant Panel Test)	CHF/CRF = 6.3kW/m², Smoke value = 136%.min		Health Product Declaration (HPD)

Recommended Installation Method(s)	Brick (Horizontal) Feature Rud: Monolithic
Recommended Area of Use	Commercial Extra Heavy Duty
Warranties	15-year Wear Warranty 15-year Dimensional Stability Warranty 15-year Anti-Static Warranty 15-year Castor Chair Wear Warranty



Alliance
Founding
Member



Left to Right: Mayala in Oceanic (MAY73-180) and Jagun in Charcoal (JAG6-133) | Brick (Horizontal) Installation

Australia:
Toll Free: 1800 668 372
New Zealand:
Toll Free: 0800 668 372
www.millikenfloors.com.au
(Australia & New Zealand)

This WellBAC® cushion-back carpet tile product is covered by one or more patents, published applications and/ or patents pending. Specifications are subject to normal manufacturing tolerances and may be changed without prior notice. Copies of actual test results are available upon request.